

# CLONAKILTY Emmet Hotel, visual guides

## My Visit to Clonakilty Emmet Hotel,

Supported by

**SuperValu**

Developed by

**AS I AM .IE**



This is The Emmet  
Hotel, Clonakilty.

Supported by

**SuperValu**

Developed by

**AS I AM .IE**



This is the reception area. I can check myself in, and ask the staff for any help I might need.



This is the front bar and dining area. I can order food/drinks. I can come to relax.



Supported by

**SuperValu**

Developed by



This is the  
courtyard area

Supported by

**SuperValu**

Developed by



When I get to the Railway Village, I will wait in the line, at the desk, for my turn.

Supported by  
**SuperValu**

Developed by



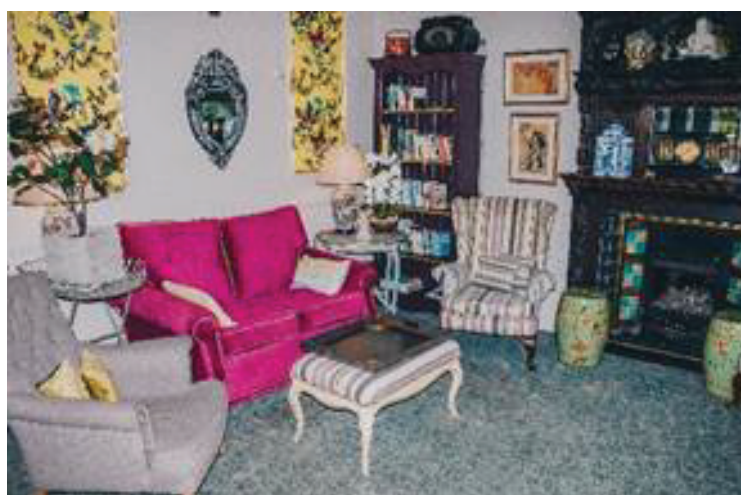
These are the bedrooms. Each one is slightly differen

Supported by

**SuperValu**

Developed by

**AS I AM .IE**



This is a quiet area of the hotel. I can come here to relax if I need to. If there is too much noise I can ask the staff to help me.

This is a private dining area. If I would like to eat in a quiet area, I can book this with staff.

