

# BELLA DONNA

## visual guides

### My visit to Bella Donna Clonakilty

Supported by

**SuperValu**

Developed by

**AS I AM .IE**



My visit to  
Bella Donna Clonakilty

Supported by  
**SuperValu**



I am going to Bella Donna today. When I see the sign over the shop I know I have arrived. We can go inside.

Supported by  
**SuperValu**

Developed by



Bella Donna is a shop where people buy clothes. When I go inside, I will see lots of clothes hanging up in places around the shop.



Supported by

**SuperValu**

Developed by



Different people work in the shop and they are there to help me. The shop is small. Sometimes there may be other people in the shop looking at the clothes too. It can be busy and a little noisy.

Supported by

**SuperValu**

Developed by

**AS I AM .IE**

Sometimes I must spend a bit of time in the shop while my guardian looks at all the clothes.



Supported by  
**SuperValu**

Developed by



There is a place I can sit while I am waiting. It is by the window. I can also sit here if I need a break.



Supported by

**SuperValu**

Developed by



Sometimes my guardian might want to try on some of the clothes. There is a changing room where the clothes can be tried on. I will need to wait until my guardian is finished trying on the clothes.



Supported by

**SuperValu**

Developed by

**AS I AM .IE**



Sometimes my guardian will decide that they want to buy something in the shop. We must go to the till to pay.



Supported by  
**SuperValu**

Developed by



We might have to wait for a staff member to come to the till, so we can pay. The till makes a noise. Our new clothes are put in a bag.

When we have paid we say goodbye and leave the shop.

Supported by

**SuperValu**

Developed by



Supported by

**SuperValu**

Developed by



When we have finished looking around the Railway Village can decide what to do next



We might take a ride on the train



Supported by  
**SuperValu**

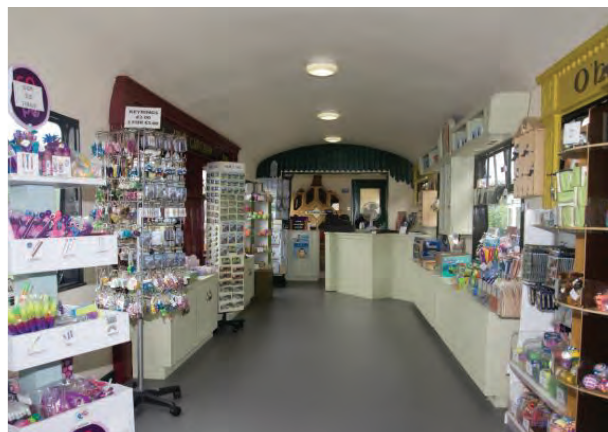
Developed by



We might go into  
the café.



Sometimes it can be a little busy and loud.  
But everyone is very friendly.  
This is where I can eat a snack or have a drink with my family.  
We might also look in the shop. It looks like a train on the  
outside.



Supported by  
**SuperValu**

Developed by



At the end of the visit, I will  
leave the Railway Village  
through the gate.